

Thursday 16th July 2020

Returning to School in September information

As we come to the end of the Summer term and the 17th week since the closure of schools on Friday 20th March, I thought it would be helpful to share with you a summary of our plans for the new academic year, 2020-21 following the Government's announcement that all children are expected to return to school full-time from September 2020.

Wednesday 2nd September: Year 1 to Year 6 children will return to school

Nursery and Reception children have been given separate information as to when they will start school

As stated in the recent newsletters, there has been a huge amount of information to digest and we have all been working hard to implement the new guidance in order to ensure that all of our children can be safely welcomed back to school. The main messages from the Government guidelines to be implemented in our school are as follows:

Organisational aspects

- Schools need to minimise contact between individuals and maintain social distancing wherever possible—although it is recognised that this may not always be possible in Primary Schools, particularly with our younger children
- Schools need to maintain year group or class 'bubbles' wherever possible
- Classroom seating to be side by side and facing forward (as opposed to in groups)
- Teachers to maintain social distancing at the front of each class
- Avoidance of large gatherings of children for assemblies/worship, school productions and celebrations
- Staggered break times and lunch times
- Staggered start and finish times to the school day

Headteacher: Mrs. A Grennan
St Luke's Primary School
Park Street South
Blakenhall
Wolverhampton
West Midlands
WV2 3AE
Phone: 01902 556434
Fax: 01902 556435



Eco-Schools
Bronze Award

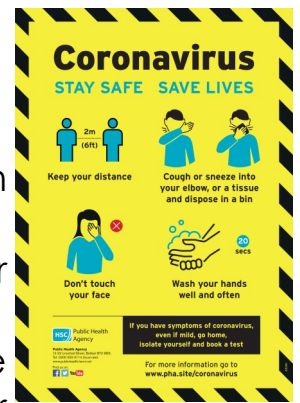


GOING FOR GROWTH



Hygiene and Illness

- Implement continued regular & thorough handwashing
- Continue with enhanced and regular cleaning regimes
- Continue to promote good respiratory hygiene through the 'Catch it, bin it, kill it' approach
- No expectation for temperature checks or masks for either staff or children
- Minimise contact with anyone who is unwell and ensure that anyone with symptoms, or if anyone in their household has symptoms, does not attend school.
- Parents/Carers should inform school immediately of any test results and adhere to latest Government guidance.
- Implementation of a comprehensive track and trace system that will allow year groups or classes to swiftly close down if instructed to do so by Public Health.



How will children who are attending school be grouped?

- Children will be taught in year group bubbles. This is because many of our children are taught in smaller groups for Reading, Maths and English.
- Each Bubble will be allocated specific classrooms and areas and will only use those areas.
- Your child will only mix with the children in their allocated Year group Bubble.
- Each Bubble will be allocated members of staff who will work with that Group Bubble alone.
- Each Bubble will have an allocated time in the dining hall in order to eat their lunch and also, an area on the playground.
- *Information regarding classes for September 2020 was in last week's newsletter and is also available on the website.*

Lunchtimes and Breakfast Snack

- Lunchtimes will be different to normal as we can only have so many children in the hall at the same time and year groups will need to be kept separate.
- There will be specific times for each year group to go into the hall and onto the playground but again, this will be monitored. If this doesn't work, it will be reviewed and it may be necessary to use classrooms.
- We will still be selling snack (£1 per week) but we will not be providing toast. We are looking into alternative options such as individually wrapped bars / brioche.
- Paying for school lunches and snack: Please either send the money in an envelope or use **SIMS pay (an online payment system)**. If you would like any information about this, please ask to speak to Mrs Ferguson—it is really easy to use and saves you lots of time and hassle!



SAFETY MEASURE



KEEP SAFE DISTANCE

Social Distancing and Safety for Parent/Carers and children

Lots of schools have implemented different starting and finishing times for each year group. We have decided that may be difficult as many of our families have children in several different year groups. Therefore, we are going to trial having a flexible start and end to the day.

Starting and Finishing times

- **Starting times for all year groups:** Children will be able to enter their classrooms / entrance (Y5 & Y6 only) between **8:45 and 9:15 a.m.**
- **Finishing times for Nursery p.m.—Year 4:** Children can be collected from their classroom doors between **3:10 and 3:30 p.m.**
- **Finishing times for Years 5 and 6:** Children will not be dismissed until **3:30 p.m.** This is because a more flexible approach will be difficult to organise as the children are upstairs.

Entrances/Exits to the school site

We are fortunate to have several entrances to the school site so we would ask parents/carers and children to use your nearest entrance.

- **Entrance 1:** Main entrance on Park Street South
- **Entrance 2:** Lower Pedestrian entrance on Blakenhall Gardens (nearest to Bob Jones Centre)
- **Entrance 3:** Upper Pedestrian entrance on Blakenhall Gardens—Nursery Gate. Please follow the path that goes past the school field and onto the playground by year 1 & 2. **Please do not go through the Reception playground as this route is for Reception children and parents only!**
- **Entrance 4:** Through the rear staff car park on Park Street South (near to the trim trail / climbing wall)

In order to help social distancing, **only one parent** to bring children onto the school site. Parents when bringing and collecting children to stay back from the classroom doors, adhering to social distancing rules.

Members of staff will be available at the beginning and end of the day in order to direct and support you. Please note that we will monitor this during the 1st week back and if it is too crowded and children/parents do not adhere to social distancing, we will have to review and implement specific staggered starting and finishing times.

Parents/Carers in school

- Parents/Carers will not be allowed into school without prior notice.
- You will need to contact school via phone or the school email to book appointments.
- Access to the main office will be limited and parents/carers will need to queue (socially distancing) until you are allowed into the foyer.

Does my child need to wear uniform?

- Children will be expected to wear school uniform as normal.
- Uniform will be on sale from school during the week before the new term starts (Wb 24 August - dates and times will be shared via text and the Facebook page).
- Children also need a PE kit and PE will be outdoors as much as possible in the Autumn term.

Breakfast & After-School Club (Skoolz Out)

- This will be available but it will be organised differently as children will be grouped in the community area/hall in their year groups.
- It is very important that parents book in advance as there will be a limit on numbers.

Illness - Very Important!

- If your child or someone in your household is not feeling well in any way, **please do not send them to school.**
- However, you will need to inform us if you think that your child is developing any symptoms of Coronavirus as there is a procedure that we need to follow with Public Health and the Local Authority.

What happens if a pupil or member of staff develops symptoms of Corona Virus?

- We have allocated a room where children can be isolated with a member of staff until you come to collect them. This will be done quietly, sensitively and with our caring approach.

We understand that many of you are feeling anxious but as a school, we have spent lots of time planning and preparing for September in order to try and keep all of our St Luke's family as safe as possible. We have a thorough risk assessment in place which was received from the Local Authority and personalised for our school, scrutinised and reviewed by the Local Authority in May 2020. We are in the process of reviewing this ready for September and again, this will be made available on our school website for you to look at.

We have also put together a short video which explains all of this information—please share with your child. Please use this link: <https://youtu.be/BUjkgjev7c> or it can be found on the school website. We hope this helps to answer some of your questions. Thank you, as always, for all your support and positive comments throughout this time, we really appreciate it.

God bless, take care and stay safe!



Mrs A Grennan
Headteacher



Mrs V Davis
Chair of Governors